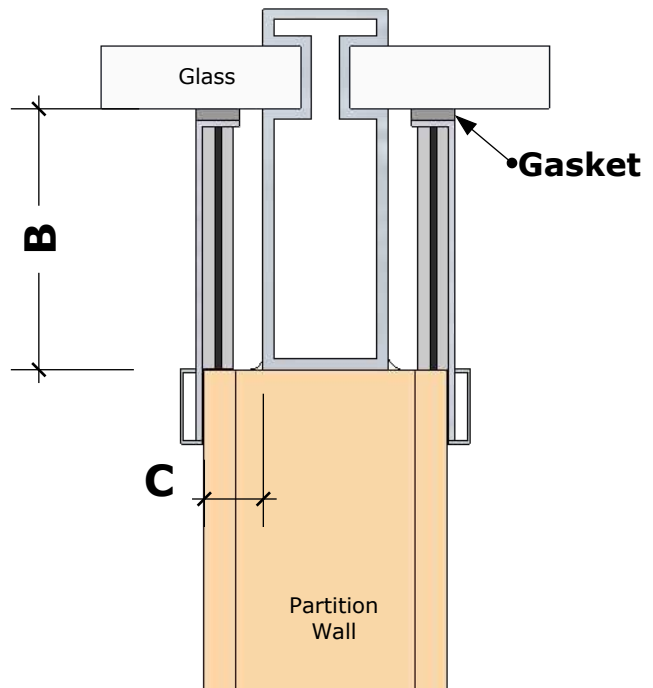
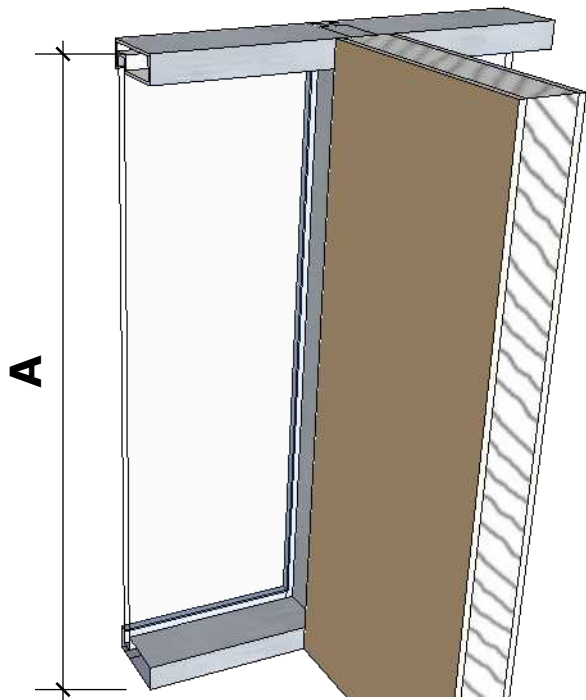


# Mull-It-Over Sound Barrier Mullion Trim Cap Field Dimension Form

Project Name: \_\_\_\_\_  
 Ship To Address \_\_\_\_\_  
 \_\_\_\_\_  
 Project Architect: \_\_\_\_\_  
 Delivery Date: \_\_\_\_\_

Contractor Contact Info:  
 Name: \_\_\_\_\_  
 e-mail: \_\_\_\_\_  
 Phone: \_\_\_\_\_  
 Contact at Project Site: \_\_\_\_\_  
 \_\_\_\_\_



A= \_\_\_\_\_

Mullion Cap Profile \_\_\_\_\_

B= \_\_\_\_\_

Mullion Cap Quantity \_\_\_\_\_

C= \_\_\_\_\_

Mullion Cap Finish \_\_\_\_\_

Gasket Options: 1/2" Gasket 1" Gasket 1-1/2" Gasket Light Gray or Charcoal  
 (circle selections)

Performance: STC 55 STC 60 1 hour Fire Rated 2 Hour Fire Rated

Length of Mullion Cap (A) Measure height of vision glass. Add to the length for extending to top or bottom of mullions and sills as detailed by the architect. Recommend ordering the mullion caps long and cutting to length in field to allow for construction tolerance of adjacent systems.

Distance from End of Partition Wall to Interior Face of Glass (B). Maximum distance for a standard profile is 7". Custom profile options may be available for larger dimensions.

Distance from the Face of Mullion to Face of Wall (C) Must be a minimum of 7/8" to use the Classic Profile or Fire Rated Mullion Caps. Select a Mull-It-Over Mullion Trim Cap profile that is compatible. Options are Classic, Flush, Wide, 1 Hour Fire Rated, 2 Hour Fire Rated and Custom profiles.